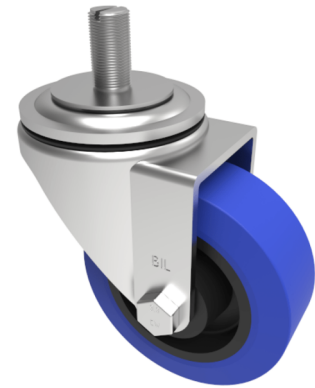


Rubber Stem Swivel Castor 80mm 100kg Load

Product code: BZH80LRNBST

Pressed steel swivel castor with stem fixing fitted with a blue 75 shore A elastic rubber tyre on black nylon centred wheel with roller bearing. Wheel diameter 80mm, tread width 34mm, overall height 110mm, Stem fitting M16 x 30mm. Load capacity 100kg.



Diameter (mm)	80
Castor Type	Swivel
Fixing Option	Stem
Height (mm)	110
Wheel Material	Rubber on Nylon
Colour / Shore Hardness	Blue Rubber on Nylon Rim / 75 Shore A
Temperature Resistance	-20 °C TO +60 °C
Bearing Type	Roller
Load Capacity (kg)	100
Tread (mm)	34
Swivel Radius (mm)	78
Head Dia (mm)	76
To Suit Fixing Bolt (mm)	M16 X 30