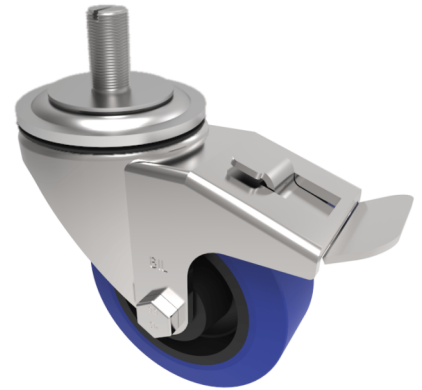


Rubber Stem Swivel Castor Brake 125mm 250kg Load

Product code: BZH125RNBSWBST

Pressed steel swivel castor with a 16mm x 30mm stem fixing fitted with a blue 75 shore A elastic rubber tyre on a black nylon centred wheel with a roller bearing and total lock brake. Wheel diameter 125mm, tread width 40mm, overall height 156mm. Load capacity 250kg.



Diameter (mm)	125
Castor Type	Swivel with Total Lock Brake
Fixing Option	Stem
Height (mm)	155
Wheel Material	Rubber on Nylon
Colour / Shore Hardness	Blue Rubber on Nylon Rim / 75 Shore A
Temperature Resistance	-20 °C TO +60 °C
Bearing Type	Roller
Load Capacity (kg)	250
Tread (mm)	40
Swivel Radius (mm)	125
Head Dia (mm)	76
To Suit Fixing Bolt (mm)	M16 X 30