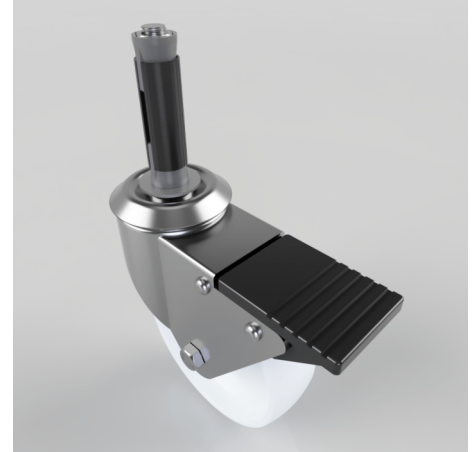


Rubber Swivel Braked Expander 100mm 70kg

Product code: BZBC100PLSWBEXR18

Pressed steel swivel castor fitted with a 18.5mm to 21mm round expander and a white polypropylene wheel with a plain bore and total lock brake. Wheel diameter 100mm, tread width 30mm, overall height 126mm, Load capacity 70kg.



Height (mm)	128
Tread (mm)	32
Bearing Type	Plain
Diameter (mm)	100
Wheel Material	Polypropylene
Fixing Option	Bolt Hole, Expander
Castor Type	Swivel with Total Lock Brake
Load Capacity (kg)	125
Swivel Radius (mm)	115
Expander Type (mm)	Round Expander to Suit 18.5 - 21
Fork Thickness (mm)	2
Head Dia (mm)	60
Colour / Shore Hardness	White Polypropylene
Temperature Resistance	-15 °C TO +60 °C