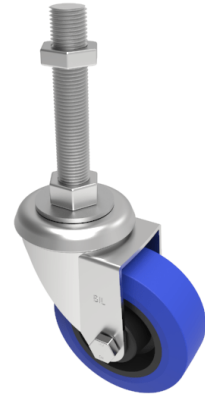


Rubber Swivel Castor 100mm 250kg Load

Product code: BZEH100RNBM16X100

Pressed steel swivel castor with a M16 x100mm adjustable stem fitted with a blue 75 shore A elastic rubber tyre on black nylon centred wheel with a roller bearing. Wheel diameter 100mm, tread width 38mm, overall height 128mm. Load capacity 250kg.



Bearing Type	Roller
Fixing Option	Bolt Hole, Stem
Height (mm)	128
Castor Material	Zinc plated
Castor Type	Swivel
Swivel Radius (mm)	90
Load Capacity (kg)	250
Thread Size	M16 x100mm
Tread (mm)	38
Diameter (mm)	100
Wheel Material	Rubber on Nylon
Colour / Shore Hardness	Blue Rubber on Nylon Rim / 75 Shore A
Fork Thickness (mm)	3
Temperature Resistance	-20 °C TO +60 °C
Head Dia (mm)	76