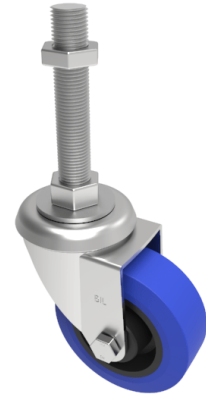


Rubber Swivel Castor 125mm 250kg Load

Product code: SSEH125RNBM20X200

Grade 304 Pressed stainless steel swivel castor with a M20 x200mm adjustable stem fitted with a blue 75 shore A elastic rubber tyre on a black nylon centred wheel with a roller bearing. Wheel diameter 125mm, tread width 40mm, overall height 155mm,. Load capacity 250kg.



Bearing Type	Roller
Fixing Option	Bolt Hole, Stem
Height (mm)	156
Castor Material	Stainless Steel
Castor Type	Swivel
Swivel Radius (mm)	106
Load Capacity (kg)	250
Thread Size	M20 x 200mm
Tread (mm)	38
Diameter (mm)	125
Wheel Material	Rubber on Nylon
Colour / Shore Hardness	Blue Rubber on Nylon Rim / 75 Shore A
Fork Thickness (mm)	3
Temperature Resistance	-20 °C TO +60 °C
Head Dia (mm)	76

BIL GROUP LTD

Porte Marsh Road, Calne, Wiltshire, SN11 9BW

Registered in England No: 2603821

VAT Reg: GB572705729

