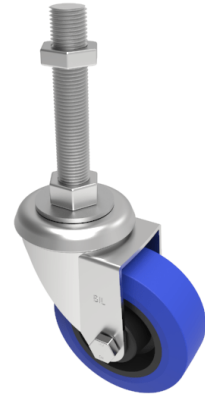


## Rubber Swivel Castor 125mm 250kg Load

**Product code: SSEH125RNBM16X150**

Grade 304 Pressed stainless steel swivel castor with a M16 x150mm adjustable stem fitted with a blue 75 shore A elastic rubber tyre on a black nylon centred wheel with a roller bearing. Wheel diameter 125mm, tread width 40mm, overall height 155mm,. Load capacity 250kg.



Bearing Type	Roller
Fixing Option	Bolt Hole, Stem
Height (mm)	156
Castor Material	Stainless Steel
Castor Type	Swivel
Swivel Radius (mm)	106
Load Capacity (kg)	250
Thread Size	M16 x 150mm
Tread (mm)	38
Diameter (mm)	125
Wheel Material	Rubber on Nylon
Colour / Shore Hardness	Blue Rubber on Nylon Rim / 75 Shore A
Fork Thickness (mm)	3
Temperature Resistance	-20 °C TO +60 °C
Head Dia (mm)	76