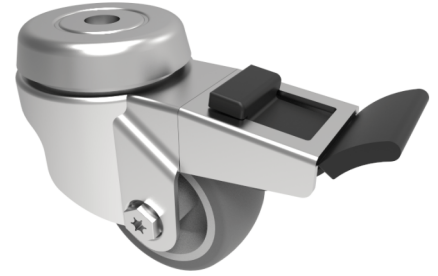


## Rubber Swivel Castor Bolt Hole Brake 75mm 70kg

**Product code: SSM75GRBH12SWB**



Grade 304 Pressed stainless steel swivel castor with a 12mm bolt hole fixing fitted with a grey thermoplastic rubber tyre on polypropylene centred wheel with a Plain Bore and total lock brake. Wheel diameter 75mm, tread width 32mm, overall height 109mm. Load capacity 70kg.

Diameter (mm)	75
Fixing Option	Bolt Hole
Castor Type	Swivel with Total Lock Brake
Height (mm)	109
Wheel Material	Rubber on Polypropylene
Colour / Shore Hardness	Grey Rubber on Polypropylene Rim / 87 Shore A
Bearing Type	Plain
Tread (mm)	24
Fork Thickness (mm)	2
To Suit Fixing Bolt (mm)	12
Load Capacity (kg)	70
Temperature Resistance	-15 °C TO +80 °C
Head Dia (mm)	60
Swivel Radius (mm)	95

### BIL GROUP LTD

Porte Marsh Road, Calne, Wiltshire, SN11 9BW

Registered in England No: 2603821

VAT Reg: GB572705729

