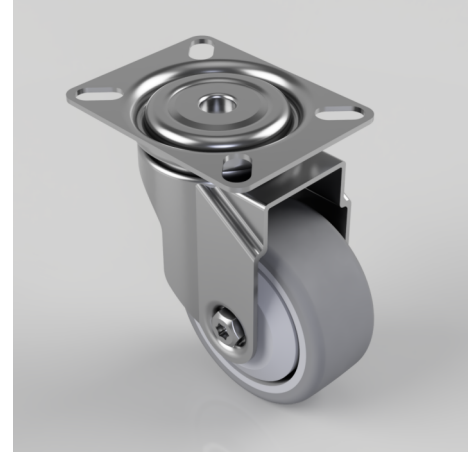


Rubber Swivel Castor Plate 75mm 70kg

Product code: BZM75GRBJ

Pressed steel swivel castor with a top plate fixing fitted with a grey thermoplastic rubber tyre on polypropylene centred wheel with ball bearing. Wheel diameter 75mm, tread width 32mm, overall height 109mm, top plate 90mm x 70mm, hole centres 75mm x 56mm or 64mm x 44mm. Load capacity 70kg.



Diameter (mm)	75
Fixing Option	Plate
Castor Type	Swivel
Plate Size (mm)	90 x 70
Hole Centres (mm)	64/75 x 44/56
Height (mm)	109
Bearing Type	Ball
Swivel Radius (mm)	66
Wheel Material	Rubber on Polypropylene
Colour / Shore Hardness	Grey Rubber on Polypropylene Rim / 82 Shore A
Top Plate Thickness (mm)	2
Fork Thickness (mm)	2
Temperature Resistance	-15 °C TO +80 °C
To Suit Fixing Bolt (mm)	8
Tread (mm)	32
Load Capacity (kg)	70

BIL GROUP LTD

Porte Marsh Road, Calne, Wiltshire, SN11 9BW

Registered in England No: 2603821

VAT Reg: GB572705729

