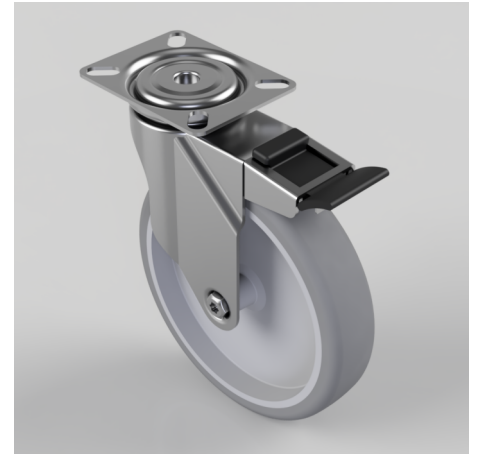


## Rubber Swivel Castor Plate Brake 150mm 100kg

**Product code: BZM150GRSWB**

Pressed steel swivel castor with a top plate fixing fitted with a grey thermoplastic rubber tyre on polypropylene centred wheel with plain bore and a total lock brake. Wheel diameter 150mm, tread width 32mm, overall height 181mm, top plate 90mm x 70mm, hole centres 75mm x 56mm or 64mm x 44mm. Load capacity 100kg. **\*\*Manufactured to Order\*\***



Diameter (mm)	150
Fixing Option	Plate
Castor Type	Swivel with Total Lock Brake
Plate Size (mm)	90 x 70
Hole Centres (mm)	64/75 x 44/56
Height (mm)	181
Bearing Type	Plain
Swivel Radius (mm)	120
Wheel Material	Rubber on Polypropylene
Colour / Shore Hardness	Grey Rubber on Polypropylene Rim / 82 Shore A
Top Plate Thickness (mm)	2
Fork Thickness (mm)	2
Temperature Resistance	-15 °C TO +80 °C
To Suit Fixing Bolt (mm)	8
Tread (mm)	32
Load Capacity (kg)	100