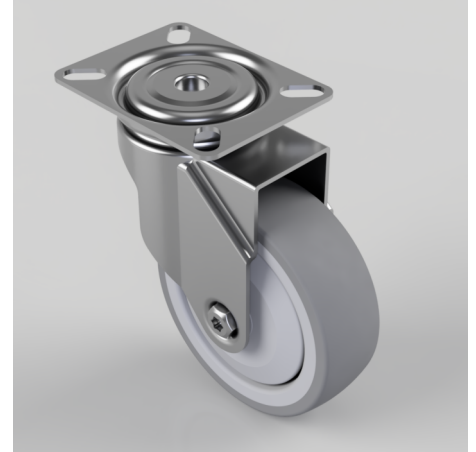


## Rubber Swivel Castor Top Plate 100mm 80kg

**Product code: BZM100GRBJ**

Pressed steel swivel castor with a top plate fixing fitted with a grey thermoplastic rubber tyre on polypropylene centred wheel with ball bearing. Wheel diameter 100mm, tread width 32mm, overall height 132mm, top plate 90mm x 70mm, hole centres 75mm x 56mm or 64mm x 44mm. Load capacity 80kg.



Diameter (mm)	100
Fixing Option	Plate
Castor Type	Swivel
Plate Size (mm)	90 x 70
Hole Centres (mm)	64/75 x 44/56
Height (mm)	132
Bearing Type	Ball
Swivel Radius (mm)	90
Wheel Material	Rubber on Polypropylene
Colour / Shore Hardness	Grey Rubber on Polypropylene Rim / 82 Shore A
Top Plate Thickness (mm)	2
Fork Thickness (mm)	2
Temperature Resistance	-15 °C TO +80 °C
To Suit Fixing Bolt (mm)	8
Tread (mm)	32
Load Capacity (kg)	80

## BIL GROUP LTD

Porte Marsh Road, Calne, Wiltshire, SN11 9BW

Registered in England No: 2603821

VAT Reg: GB572705729

