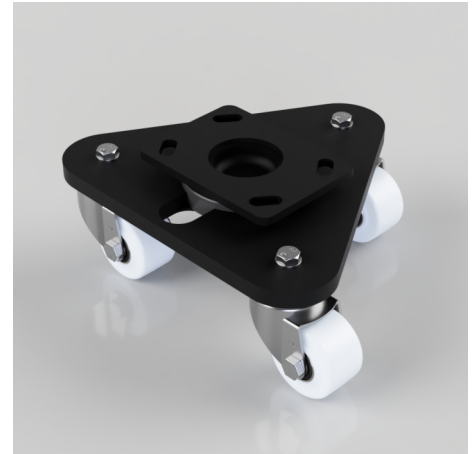


Scenery Skate Nylon Plate Swivel Castor 65mm 450kg Load

Product code: BZSKH65NYBJ

Central heavy duty swivel head, mounted on a triangular base plate fitted with 3 pressed steel swivel castors fitted with 65mm x 37mm nylon wheels with ball bearings. Overall height 121mm, Plate size 150mm x 110mm, hole centres 105mm x 80mm or 121mm x 59mm, Load capacity 450kg.



Diameter (mm)	65
Castor Type	Swivel
Fixing Option	Plate
Height (mm)	121
To Suit Fixing Bolt (mm)	12
Bearing Type	Ball
Swivel Radius (mm)	188
Wheel Material	Nylon
Colour / Shore Hardness	White Nylon
Tread (mm)	37
Temperature Resistance	-30 °C TO +80 °C
Load Capacity (kg)	450
Plate Size (mm)	150 x 110
Hole Centres (mm)	105/121 x 80/59

BIL GROUP LTD

Porte Marsh Road, Calne, Wiltshire, SN11 9BW

Registered in England No: 2603821

VAT Reg: GB572705729

