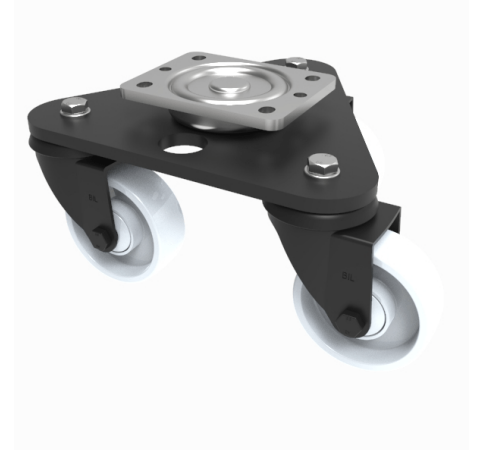


Scenery Skate Nylon Plate Swivel Castor 80mm 450kg Load

Product code: BLKSKM80NYBJ

Central medium duty white zinc plated swivel head mounted on a black painted triangular base plate fitted with 3 pressed steel black painted swivel castors fitted with a white nylon wheel with single ball bearing and retaining caps. Wheel diameter 80mm, tread width 32mm, overall height 147mm. Load capacity 450kg.



Diameter (mm)	80
Castor Type	Swivel
Fixing Option	Plate
Height (mm)	147
To Suit Fixing Bolt (mm)	10
Bearing Type	Ball
Swivel Radius (mm)	202
Wheel Material	Polyurethane on Steel
Colour / Shore Hardness	White Nylon
Tread (mm)	32
Temperature Resistance	-30 °C TO +80 °C
Load Capacity (kg)	450
Plate Size (mm)	138 x 110
Hole Centres (mm)	105 x 80/75