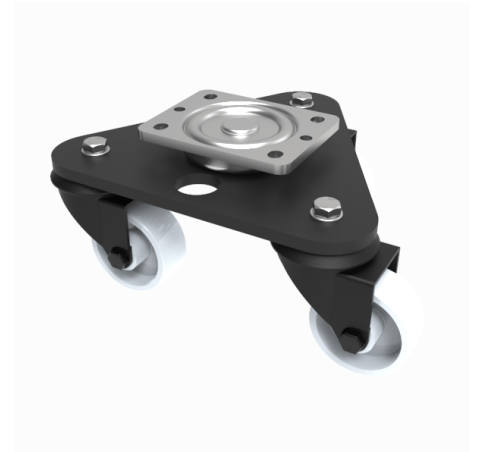


## Scenery Skate Nylon Plate Swivel Castor 80mm 460kg Load

**Product code: BLKSKM80NYB**

Central medium duty zinc plated swivel head mounted on a black painted triangular base plate fitted with 3 pressed steel black painted swivel castors fitted with a white nylon wheel with roller bearings. Wheel diameter 80mm, tread width 35mm, overall height 147mm. Load capacity 460kg.



Diameter (mm)	80
Castor Type	Swivel
Fixing Option	Plate
Height (mm)	147
To Suit Fixing Bolt (mm)	10
Bearing Type	Roller
Swivel Radius (mm)	202
Wheel Material	Nylon
Colour / Shore Hardness	White Nylon
Tread (mm)	35
Temperature Resistance	-30 °C TO +80 °C
Load Capacity (kg)	460
Plate Size (mm)	135 x 110
Hole Centres (mm)	105 x 80/75