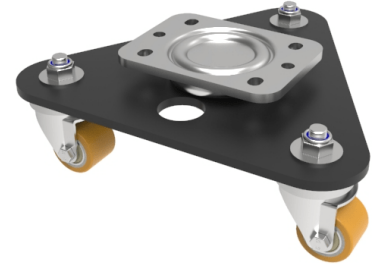


Scenery Skate Polyurethane Cast Iron Plate Swivel Castor 35mm 225kg Load

Product code: BZSKL35PTBJ



Central medium duty swivel head, mounted on a triangular base plate fitted with 3 pressed steel swivel castors fitted with 35mm brown 92 shore A polyurethane tyre steel centred wheels with ball bearings. Overall height 84mm, Mounting Plate size 115 x 85mm, hole centres 80 x 60mm, Load capacity 225kg.

Diameter (mm)	35
Castor Type	Swivel
Fixing Option	Plate
Height (mm)	84
To Suit Fixing Bolt (mm)	8
Bearing Type	Ball
Swivel Radius (mm)	139
Wheel Material	Polyurethane on Steel
Colour / Shore Hardness	Orange Polyuerthane on Steel Rim / 94 Shore A
Tread (mm)	27
Temperature Resistance	-20 °C TO +80 °C
Load Capacity (kg)	225
Plate Size (mm)	115 x 85
Hole Centres (mm)	80 X 60