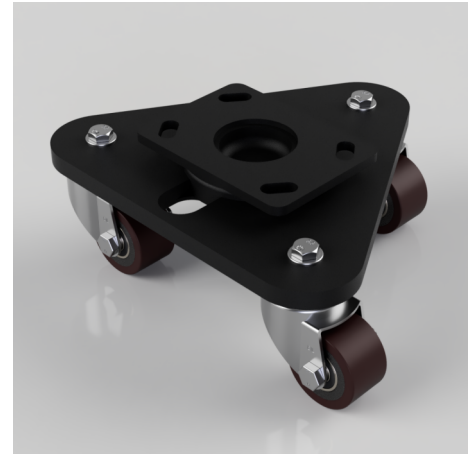


Scenery Skate Polyurethane Cast Iron Plate Swivel Castor 60mm 405kg Load

Product code: BZSKH60PTBJ

Central heavy duty swivel head mounted on a triangular base plate fitted with 3 pressed steel swivel castors fitted with polyurethane tyred cast iron centred wheel with ball bearings. Wheel diameter 60mm, tread width 35mm, overall height 118mm. Load capacity 405kg.



Diameter (mm)	60
Castor Type	Swivel
Fixing Option	Plate
Height (mm)	118
To Suit Fixing Bolt (mm)	12
Bearing Type	Ball
Swivel Radius (mm)	185
Wheel Material	Polyurethane on Cast Iron
Colour / Shore Hardness	Brown Polyurethane on Cast Iron Rim / 94 Shore A
Tread (mm)	35
Temperature Resistance	-20 °C TO +80 °C
Load Capacity (kg)	405
Plate Size (mm)	150 x 110
Hole Centres (mm)	105/121 x 80/59