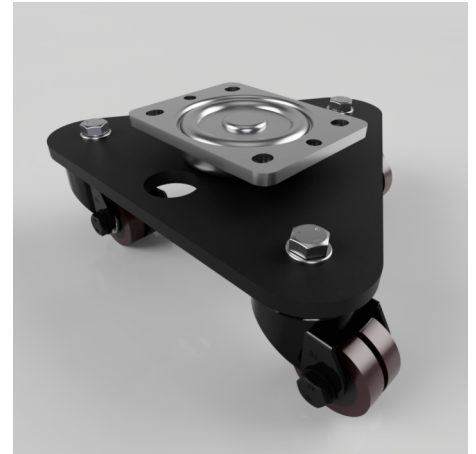


## Scenery Skate Polyurethane Cast Iron Plate Twin Swivel Castor 50mm 360kg Load

**Product code: 2BLKSKM50PT**

Central medium duty white zinc plated swivel head, mounted on a black painted triangular base plate fitted with 3 pressed steel black painted swivel castors fitted with 2 X 50mm polyurethane on cast iron wheels with plain bore. Overall height 109mm, Plate size 138 x 109mm, hole centres 105 x 80mm Load capacity 360kg.



Diameter (mm)	50
Castor Type	Swivel
Fixing Option	Plate
Height (mm)	109
To Suit Fixing Bolt (mm)	10
Bearing Type	Plain
Swivel Radius (mm)	180
Wheel Material	Polyurethane on Steel
Colour / Shore Hardness	Brown Polyurethane on Steel Rim / 94 Shore A
Tread (mm)	14 x 2
Temperature Resistance	-20 °C TO +80 °C
Load Capacity (kg)	360
Plate Size (mm)	135 x 110
Hole Centres (mm)	105 x 80/75