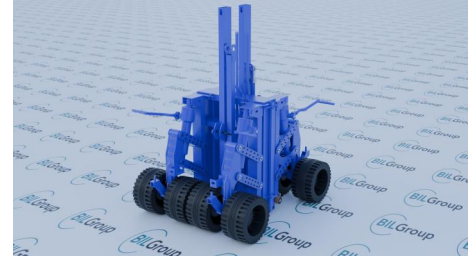


Set of 4 Hydraulic Lifting Container Castors 550mm 15,000kg Set Load

Product code: ISO15HLC/SET



- Attach easily to DIN 1161 ISO-Corners
- Enables easy movement, even in narrow places and with restricted heights
- Moves your container in any direction
- Reinforced tow bar to allow for towing
- 450mm lift
- 15,000kg load capacity (per set)
- Designed in accordance to NATO and Aerospace standards

****MANUFACTURED TO ORDER DELIVERY TIME 16 WEEKS****

Bearing Type	Ball
Castor Type	Swivel
Colour / Shore Hardness	Black Rubber on Steel Rim / 85 Shore A
Diameter (mm)	550
Fixing Option	ISO fixing
Tread (mm)	2 x 150
Wheel Material	Rubber on Steel
Load Capacity (kg)	15000 Per Set

BIL GROUP LTD

Porte Marsh Road, Calne, Wiltshire, SN11 9BW

Registered in England No: 2603821

VAT Reg: GB572705729

