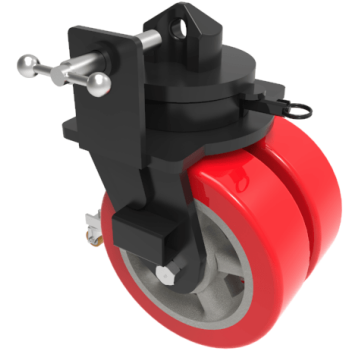


Set of 4 x 305mm ISO Container Castors Load Capacity per set (4 x castors) 28,000kg

Product code: ISO2X305PTBJDLSA/SET



ISO Container Castor. Twin wheel 305mm diameter. Tread width 2 x 100mm. Height to ISO fixing 385mm. Fitted with directional locks and steering arm blocks. Load capacity per set (4 x castors) 28,000kg

Height (mm)	385
Tread (mm)	2 x 100
Diameter (mm)	305
Load Capacity (kg)	28000
Bearing Type	Ball
Fixing Option	ISO fixing
Castor Type	Swivel with Directional Locks
Wheel Material	Polyurethane on Cast Iron
Colour / Shore Hardness	Red Polyurethane on Cast Iron / 95 Shore A
Temperature Resistance	-30 °C TO +80 °C

BIL GROUP LTD

Porte Marsh Road, Calne, Wiltshire, SN11 9BW

Registered in England No: 2603821

VAT Reg: GB572705729

