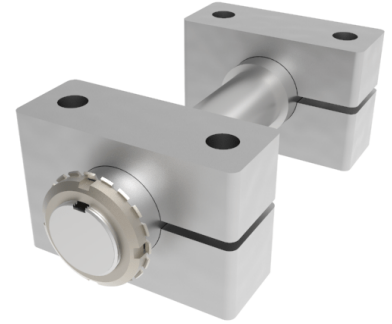


Single Mount Steel Axle Mounting Diameter 40mm 9000kg Load

Product code: SMA40



POA Single axle assembly, to suit axle diameter 40mm, total length 265mm, minimum axle hub length 70mm, maximum axle length 90mm, thread diameter 50mm, fixing block width 130mm, Fixing hole centres 90mm, load capacity 9000kg

****MANUFACTURED TO ORDER****

To suit axle diameter (mm)	40
Total length (mm)	265
Axle Shoulder Length (mm)	80
Minimum Axle Hub Length (mm)	70
Maximum Axle Hub Length (mm)	90
Maximum Block Position (mm)	30
Shoulder Diameter (mm)	50
Fixing Block Length (mm)	130
Fixing hole centres (mm)	90
Fixing Bolt (mm)	16
Fixing block width (mm)	50
Load Capacity (kg)	9000

BIL GROUP LTD

Porte Marsh Road, Calne, Wiltshire, SN11 9BW

Registered in England No: 2603821

VAT Reg: GB572705729

