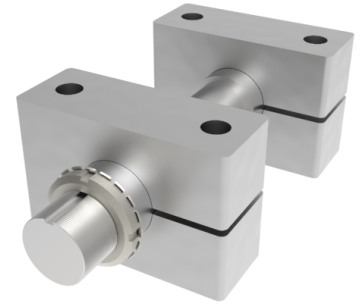


## Single Mount Steel Axle Mounting Diameter 50mm 14000kg Load

**Product code: SMA50**

**POA** Single axle assembly, to suit axle diameter 50mm, total length 340mm, minimum axle hub length 80mm, maximum axle length 110mm, thread diameter 60mm, fixing block width 170mm, Fixing hole centres 120mm, load capacity 14000kg

**\*\*MANUFACTURED TO ORDER\*\***



To suit axle diameter (mm)	50
Total length (mm)	340
Axle Shoulder Length (mm)	105
Minimum Axle Hub Length (mm)	80
Maximum Axle Hub Length (mm)	110
Maximum Block Position (mm)	40
Shoulder Diameter (mm)	60
Fixing Block Length (mm)	170
Fixing hole centres (mm)	120
Fixing Bolt (mm)	20
Fixing block width (mm)	65
Load Capacity (kg)	14000

### BIL GROUP LTD

Porte Marsh Road, Calne, Wiltshire, SN11 9BW

Registered in England No: 2603821

VAT Reg: GB572705729

