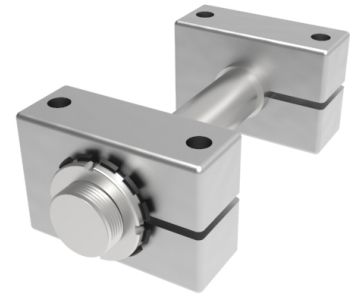


Single Mount Steel Axle Mounting Diameter 75mm 40000kg Load

Product code: SMA75

POA Single axle assembly, to suit axle diameter 75mm, total length 390mm, minimum axle hub length 80mm, maximum axle length 125mm, thread diameter 85mm, fixing block width 210mm, Fixing hole centres 150mm, load capacity 40000kg

****MANUFACTURED TO ORDER****



To suit axle diameter (mm)	75
Total length (mm)	390
Axle Shoulder Length (mm)	105
Minimum Axle Hub Length (mm)	80
Maximum Axle Hub Length (mm)	125
Maximum Block Position (mm)	40
Shoulder Diameter (mm)	85
Fixing Block Length (mm)	210
Fixing hole centres (mm)	150
Fixing Bolt (mm)	24
Fixing block width (mm)	80
Load Capacity (kg)	40000

BIL GROUP LTD

Porte Marsh Road, Calne, Wiltshire, SN11 9BW

Registered in England No: 2603821

VAT Reg: GB572705729

