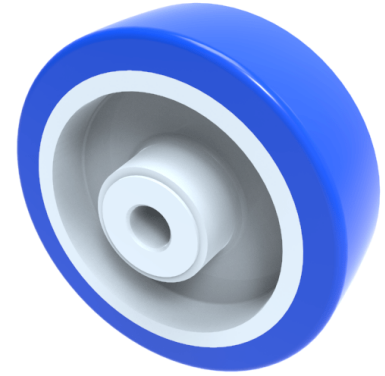


Soft Blue Polyurethane Nylon 100mm Plain Bearing Wheel 250kg Load

Product code: BZMM100WENP

Blue 82 shore hardness polyurethane tyred nylon centred plain bore. Wheel diameter 100mm, tread width 32mm, bore size 12mm, hub length 40mm. Load capacity 250kg.



Bearing Type	Plain
Bore Size (mm)	12
Diameter (mm)	100
Hub Width (mm)	40
Load Capacity (kg)	250
Tread (mm)	32
Wheel Material	Polyurethane on Nylon
Colour / Shore Hardness	Blue Polyurethane on Nylon Rim / 82 Shore A
Temperature Resistance	-30 °C TO +70 °C

BIL GROUP LTD

Porte Marsh Road, Calne, Wiltshire, SN11 9BW

Registered in England No: 2603821

VAT Reg: GB572705729

