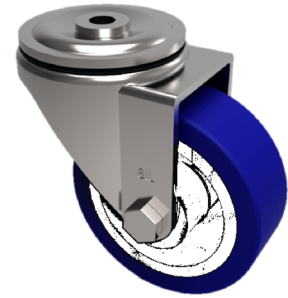


Soft Blue Polyurethane Nylon Bolt Hole Swivel Castor 100mm 150kg Load

Product code: BZMM100ENPBH12



Pressed steel swivel castor 12mm bolt hole fitted with a 82 shore A blue polyurethane tyre white nylon centred wheel with plain bore. Wheel diameter 100mm, tread width 32mm, overall height 128mm, Load capacity 150kg.

| | |
|--------------------------|--|
| Diameter (mm) | 100 |
| Castor Type | Swivel |
| Fixing Option | Bolt Hole |
| Height (mm) | 128 |
| Wheel Material | Polyurethane on Nylon |
| Colour / Shore Hardness | Blue Polyurethane on NylonRim / 82 Shore A |
| Temperature Resistance | -30 °C TO +60 °C |
| Bearing Type | Plain |
| Load Capacity (kg) | 150 |
| Tread (mm) | 32 |
| Swivel Radius (mm) | 88 |
| Head Dia (mm) | 76 |
| Fork Thickness (mm) | 2 |
| To Suit Fixing Bolt (mm) | 12 |