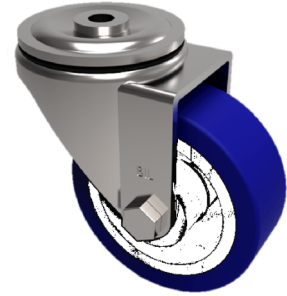


Soft Blue Polyurethane Nylon Bolt Hole Swivel Castor 100mm 250kg Load

Product code: BZH100ENPBJBH12

Pressed steel swivel castor with 12mm bolt hole fixing fitted with a blue 82 shore A polyurethane tyre on white nylon centred wheel with ball bearing. Wheel diameter 100mm, tread width 32mm, overall height 128mm. Load capacity 250kg.



Diameter (mm)	100
Castor Type	Swivel
Fixing Option	Bolt Hole
Height (mm)	128
Wheel Material	Polyurethane on Nylon
Colour / Shore Hardness	Blue Polyurethane on NylonRim / 82 Shore A
Temperature Resistance	-30 °C TO +60 °C
Bearing Type	Ball
Load Capacity (kg)	250
Tread (mm)	32
Swivel Radius (mm)	90
Head Dia (mm)	76
Fork Thickness (mm)	4
To Suit Fixing Bolt (mm)	12

BIL GROUP LTD

Porte Marsh Road, Calne, Wiltshire, SN11 9BW

Registered in England No: 2603821

VAT Reg: GB572705729

