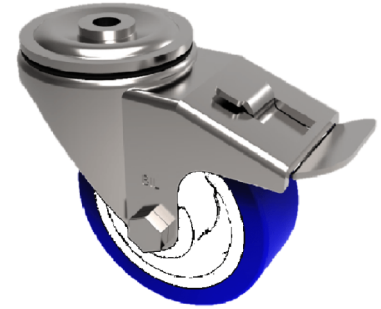


Soft Blue Polyurethane Nylon Bolt Hole Swivel Castor Brake 100mm 150kg

Product code: BZMM100ENPBBH12SWB



Pressed steel swivel castor with 12mm bolt hole fitted with a 82 shore A blue polyurethane tyre white nylon centred wheel with roller bearings with a total lock brake. Wheel diameter 100mm, tread width 32mm, overall height 128mm, load capacity 150kg.

Diameter (mm)	100
Castor Type	Swivel with Total Lock Brake
Fixing Option	Bolt Hole
Height (mm)	128
Wheel Material	Polyurethane on Nylon
Colour / Shore Hardness	Blue Polyurethane on NylonRim / 82 Shore A
Temperature Resistance	-30 °C TO +60 °C
Bearing Type	Roller
Load Capacity (kg)	150
Tread (mm)	32
Swivel Radius (mm)	88
Head Dia (mm)	76
Fork Thickness (mm)	2
To Suit Fixing Bolt (mm)	12