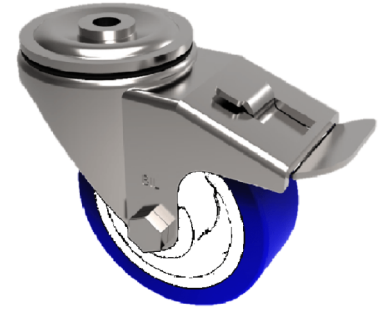


## Soft Blue Polyurethane Nylon Bolt Hole Swivel Castor Brake 125mm 250kg

**Product code: BZH125ENPBBH12SWB**



Pressed steel swivel castor with a 12mm bolt hole fitted with a 82 shore A blue polyurethane tyred on a white nylon centred wheel with a roller bearing and total lock brake. Wheel diameter 125mm, tread width 35mm, overall height 155mm, Load capacity 250kg.

Diameter (mm)	125
Castor Type	Swivel with Total Lock Brake
Fixing Option	Bolt Hole
Height (mm)	155
Wheel Material	Polyurethane on Nylon
Colour / Shore Hardness	Blue Polyurethane on NylonRim / 82 Shore A
Temperature Resistance	-30 °C TO +60 °C
Bearing Type	Roller
Load Capacity (kg)	250
Tread (mm)	35
Swivel Radius (mm)	104
Head Dia (mm)	76
Fork Thickness (mm)	4
To Suit Fixing Bolt (mm)	12