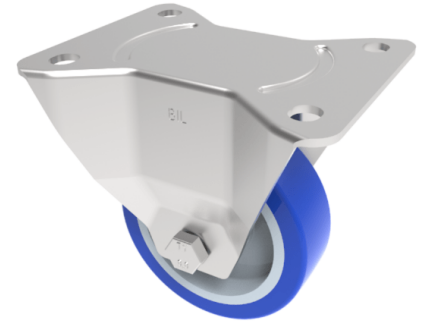


## Soft Blue Polyurethane Nylon Fixed Plate Castor 100mm 250kg Load

**Product code: SSPHF100ENPB**



Grade 304 Pressed stainless steel fixed castor with a top plate fixing fitted with a blue polyurethane tyred white nylon centred wheel with a roller bearing. Wheel diameter 100mm, tread width 33mm, overall height 132mm, top plate 135mm x 110mm, hole centres 105mm x 80mm. Load capacity 250kg

Diameter (mm)	100
Fixing Option	Plate
Castor Type	Fixed
Height (mm)	132
Wheel Material	Polyurethane on Nylon
Colour / Shore Hardness	Blue Polyurethane on NylonRim / 82 Shore A
Bearing Type	Roller
Tread (mm)	33
Fork Thickness (mm)	4
To Suit Fixing Bolt (mm)	10
Load Capacity (kg)	250
Temperature Resistance	-30 °C TO +60 °C
Plate Size (mm)	135 x 110
Hole Centres (mm)	105 x 80/75
Top Plate Thickness (mm)	4

### BIL GROUP LTD

Porte Marsh Road, Calne, Wiltshire, SN11 9BW

Registered in England No: 2603821

VAT Reg: GB572705729

