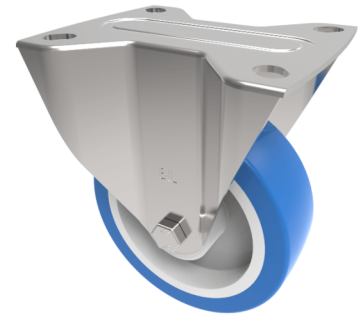


## Soft Blue Polyurethane Nylon Plate Fixed Castor 100mm 150kg Load

**Product code: SSMMF100ENPB**



Grade 304 Pressed stainless steel fixed castor top plate fixing fitted with a 82 shore A blue elastic polyurethane on white nylon centred wheel with roller bearings. Wheel diameter 100mm, tread width 32mm, overall height 128mm, top plate 105mm x 85mm, hole centres 80mm x 60mm. Load capacity 150kg.

Diameter (mm)	100
Fixing Option	Plate
Castor Type	Fixed
Height (mm)	128
Wheel Material	Polyurethane on Nylon
Colour / Shore Hardness	Blue Polyurethane on NylonRim / 82 Shore A
Bearing Type	Roller
Tread (mm)	33
Fork Thickness (mm)	2
To Suit Fixing Bolt (mm)	8
Load Capacity (kg)	180
Temperature Resistance	-30 °C TO +60 °C
Plate Size (mm)	105 X 85
Hole Centres (mm)	80 X 60
Top Plate Thickness (mm)	2