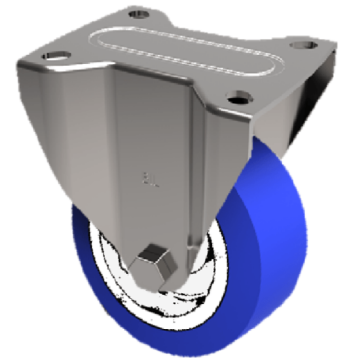


Soft Blue Polyurethane Nylon Plate Fixed Castor 100mm 250kg Load

Product code: BZHF100ENPBJ

Pressed steel fixed castor with fitted a top plate with a blue 82 shore A polyurethane tyre on white nylon centred wheel with ball bearing. Wheel diameter 100mm, tread width 32mm, overall height 128mm. Load capacity 250kg.



Diameter (mm)	100
Castor Type	Fixed
Fixing Option	Plate
Height (mm)	128
Wheel Material	Polyurethane on Nylon
Colour / Shore Hardness	Blue Polyurethane on NylonRim / 82 Shore A
Temperature Resistance	-30 °C TO +60 °C
Bearing Type	Ball
Load Capacity (kg)	250
Tread (mm)	32
Plate Size (mm)	105 x 86
Hole Centres (mm)	80 X 60
Top Plate Thickness (mm)	4
Fork Thickness (mm)	4
To Suit Fixing Bolt (mm)	8