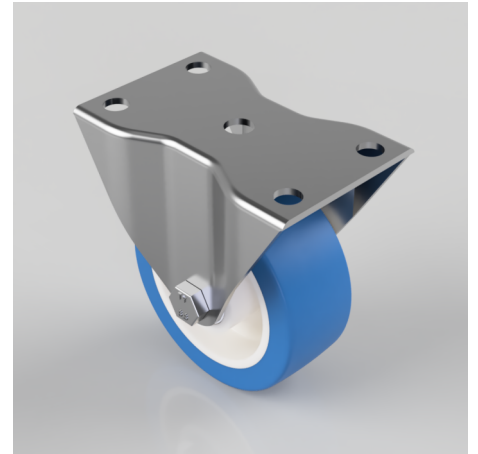


Soft Blue Polyurethane Nylon Plate Fixed Castor 100mm 250kg Load

Product code: BZHF100ENPBLP

Pressed steel fixed castor with a top plate fixing fitted with a blue 82 shore A polyurethane tyre on white nylon centre wheel with roller bearings. Wheel diameter 100mm, tread width 40mm, overall height 127mm, top plate 122mm x 77mm, hole centres 100mm x 48mm Load capacity 250kg. Please note the tyre is flat and designed for floor protection but this may increase tractive resistance.



Diameter (mm)	100
Castor Type	Fixed
Fixing Option	Plate
Height (mm)	127
Wheel Material	Polyurethane on Nylon
Colour / Shore Hardness	Blue Polyurethane on Nylon Rim / 82 Shore A
Temperature Resistance	-30 °C TO +60 °C
Bearing Type	Roller
Load Capacity (kg)	250
Tread (mm)	40
Plate Size (mm)	122 x 77
Hole Centres (mm)	100 x 48
Top Plate Thickness (mm)	3
Fork Thickness (mm)	3
To Suit Fixing Bolt (mm)	10

BIL GROUP LTD

Porte Marsh Road, Calne, Wiltshire, SN11 9BW

Registered in England No: 2603821

VAT Reg: GB572705729

