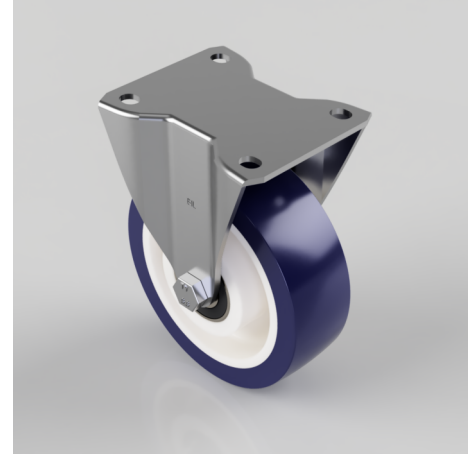


## Soft Blue Polyurethane Nylon Plate Fixed Castor 125mm 250kg Load

**Product code: BZHF125ENPBJ**

Pressed steel fixed castor with a top plate fixing fitted with a 82 shore A blue polyurethane tyred on a white nylon centred wheel with ball bearings. Wheel diameter 125mm, tread width 40mm, overall height 156mm, top plate 105mm x 86mm, hole centres 80mm x 60mm. Load capacity 250kg.



Diameter (mm)	125
Castor Type	Fixed
Fixing Option	Plate
Height (mm)	156
Wheel Material	Polyurethane on Nylon
Colour / Shore Hardness	Blue Polyurethane on NylonRim / 82 Shore A
Temperature Resistance	-30 °C TO +60 °C
Bearing Type	Ball
Load Capacity (kg)	250
Tread (mm)	40
Plate Size (mm)	105 x 86
Hole Centres (mm)	80 X 60
Top Plate Thickness (mm)	3
Fork Thickness (mm)	3
To Suit Fixing Bolt (mm)	8

### BIL GROUP LTD

Porte Marsh Road, Calne, Wiltshire, SN11 9BW

Registered in England No: 2603821

VAT Reg: GB572705729

