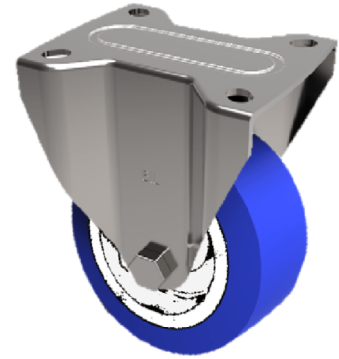


## Soft Blue Polyurethane Nylon Plate Fixed Castor 125mm 250kg Load

**Product code: BZPHF125ENPB**

Pressed steel fixed castor with a top plate fixing fitted with a 82 shore A blue polyurethane tyred on a white nylon centred wheel with a roller bearing. Wheel diameter 125mm, tread width 35mm, overall height 157mm, top plate 135mm x 110mm, hole centres 105mm x 80mm. Load capacity 250kg.



Diameter (mm)	125
Castor Type	Fixed
Fixing Option	Plate
Height (mm)	155
Wheel Material	Polyurethane on Nylon
Colour / Shore Hardness	Blue Polyurethane on NylonRim / 82 Shore A
Temperature Resistance	-30 °C TO +60 °C
Bearing Type	Roller
Load Capacity (kg)	250
Tread (mm)	35
Plate Size (mm)	135 x 115
Hole Centres (mm)	105 x 80/75
Top Plate Thickness (mm)	4
Fork Thickness (mm)	4
To Suit Fixing Bolt (mm)	10