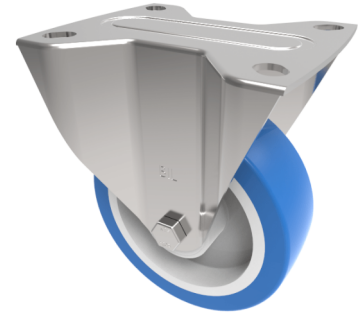


Soft Blue Polyurethane Nylon Plate Fixed Castor 125mm 300kg Load

Product code: SSEHF125ENP



Grade 304 Pressed stainless steel fixed castor with a top plate fixing fitted with a 82 shore A blue polyurethane tyred white nylon centred wheel with a Plain Bore, Wheel diameter 125mm, tread width 35mm, overall height 155mm, top plate 105mm x 86mm, hole centres 80mm x 60mm. Load capacity 300kg

| | |
|--------------------------|--|
| Diameter (mm) | 125 |
| Fixing Option | Plate |
| Castor Type | Fixed |
| Height (mm) | 156 |
| Wheel Material | Polyurethane on Nylon |
| Colour / Shore Hardness | Blue Polyurethane on NylonRim / 82 Shore A |
| Bearing Type | Plain |
| Tread (mm) | 35 |
| Fork Thickness (mm) | 3 |
| To Suit Fixing Bolt (mm) | 8 |
| Load Capacity (kg) | 300 |
| Temperature Resistance | -30 °C TO +60 °C |
| Plate Size (mm) | 105 x 86 |
| Hole Centres (mm) | 80 X 60 |
| Top Plate Thickness (mm) | 3 |