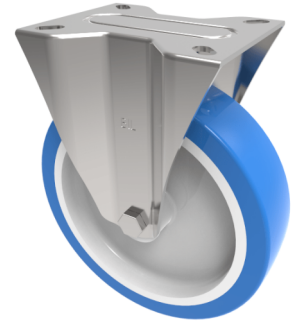


## Soft Blue Polyurethane Nylon Plate Fixed Castor 150mm 400kg Load

**Product code: SSMMF150ENP**



Grade 304 Pressed stainless steel fixed castor with a top plate fixing fitted with a 82 shore A blue polyurethane white nylon centred wheel with a plain bore. Wheel diameter 150mm, tread width 40mm, overall height 190mm, top plate 140mm x 110mm, hole centres 105mm x 80mm/75mm. Load capacity 400kg.

Diameter (mm)	150
Fixing Option	Plate
Castor Type	Fixed
Height (mm)	190
Wheel Material	Polyurethane on Nylon
Colour / Shore Hardness	Blue Polyurethane on NylonRim / 82 Shore A
Bearing Type	Plain
Tread (mm)	40
Fork Thickness (mm)	2
To Suit Fixing Bolt (mm)	8
Load Capacity (kg)	400
Temperature Resistance	-30 °C TO +60 °C
Plate Size (mm)	135 x 110
Hole Centres (mm)	105 x 80
Top Plate Thickness (mm)	3