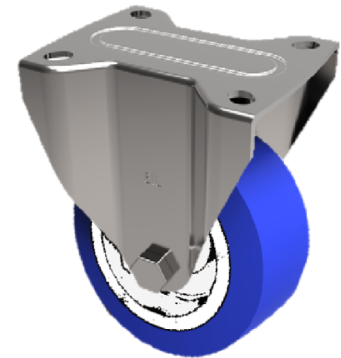


Soft Blue Polyurethane Nylon Plate Fixed Castor 150mm 500kg Load

Product code: BZPHF150ENPBJ



Pressed steel fixed castor with a top plate fitted with a 82 shore A blue polyurethane tyre white nylon centred wheel with ball bearings. Wheel diameter 150mm, tread width 40mm, overall height 188mm, top plate 135mm x 115mm, hole centres 105mm x 80/75mm. Load capacity 500kg.

Diameter (mm)	150
Castor Type	Fixed
Fixing Option	Plate
Height (mm)	190
Wheel Material	Polyurethane on Nylon
Colour / Shore Hardness	Blue Polyurethane on NylonRim / 82 Shore A
Temperature Resistance	-30 °C TO +60 °C
Bearing Type	Ball
Load Capacity (kg)	500
Tread (mm)	40
Plate Size (mm)	135 x 115
Hole Centres (mm)	105 x 80/75
Top Plate Thickness (mm)	5
Fork Thickness (mm)	5
To Suit Fixing Bolt (mm)	10

BIL GROUP LTD

Porte Marsh Road, Calne, Wiltshire, SN11 9BW

Registered in England No: 2603821

VAT Reg: GB572705729

