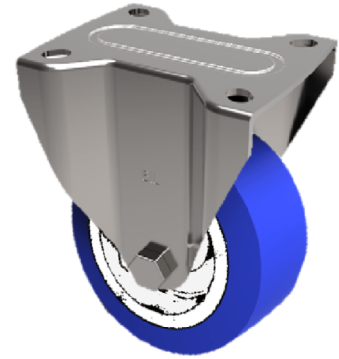


Soft Blue Polyurethane Nylon Plate Fixed Castor 200mm 500kg Load

Product code: BZPHF200ENPBJ

Pressed steel fixed castor with top plate fixing fitted with a 82 shore A blue polyurethane tyre on white nylon centred wheel with ball bearing. Wheel diameter 200mm, tread width 50mm, overall height 238mm, plate size 135mm x 115mm, hole centres 105mm x 80/75mm. Load capacity 500kg.



Diameter (mm)	200
Castor Type	Fixed
Fixing Option	Plate
Height (mm)	238
Wheel Material	Polyurethane on Nylon
Colour / Shore Hardness	Blue Polyurethane on NylonRim / 82 Shore A
Temperature Resistance	-30 °C TO +60 °C
Bearing Type	Ball
Load Capacity (kg)	500
Tread (mm)	50
Plate Size (mm)	135 x 115
Hole Centres (mm)	105 x 80/75
Top Plate Thickness (mm)	4
Fork Thickness (mm)	4
To Suit Fixing Bolt (mm)	10