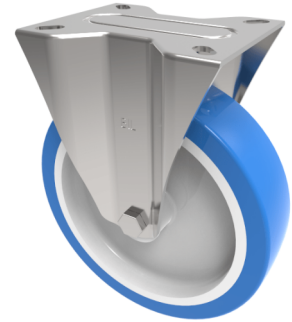


Soft Blue Polyurethane Nylon Plate Fixed Castor 80mm 150kg Load

Product code: SSMMF80ENPB



Grade 304 Pressed stainless steel fixed swivel castor top plate fixing fitted with a 82 shore A blue elastic polyurethane on white nylon centred wheel with a roller bearing. Wheel diameter 80mm, tread width 30mm, overall height 128mm, top plate 105mm x 85mm, hole centres 80mm x 60mm. Load capacity 150kg.

Diameter (mm)	80
Fixing Option	Plate
Castor Type	Fixed
Height (mm)	105
Wheel Material	Polyurethane on Nylon
Colour / Shore Hardness	Blue Polyurethane on NylonRim / 82 Shore A
Bearing Type	Roller
Tread (mm)	33
Fork Thickness (mm)	2
To Suit Fixing Bolt (mm)	8
Load Capacity (kg)	150
Temperature Resistance	-30 °C TO +60 °C
Plate Size (mm)	105 X 85
Hole Centres (mm)	80 X 60
Top Plate Thickness (mm)	2

BIL GROUP LTD

Porte Marsh Road, Calne, Wiltshire, SN11 9BW

Registered in England No: 2603821

VAT Reg: GB572705729

