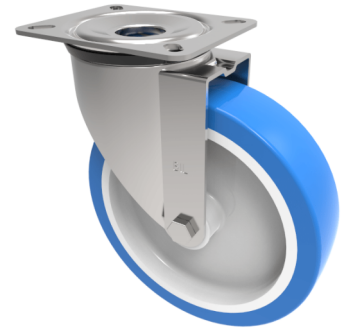


Soft Blue Polyurethane Nylon Plate Swivel Braked Castor 150mm 500kg Load

Product code: SSPH150ENPSWB



Grade 304 Pressed stainless steel swivel castor with a top plate fixing fitted with a blue 82 shore A polyurethane tyred white nylon centred wheel with a plain bore and total lock brake. Wheel diameter 150mm, tread width 40mm, overall height 190mm, top plate 135mm x 110mm, hole centres 105mm x 80mm. Load capacity 500kg

Diameter (mm)	150
Fixing Option	Plate
Castor Type	Swivel with Total Lock Brake
Height (mm)	190
Wheel Material	Polyurethane on Nylon
Colour / Shore Hardness	Blue Polyurethane on NylonRim / 82 Shore A
Bearing Type	Plain
Tread (mm)	40
Fork Thickness (mm)	4
To Suit Fixing Bolt (mm)	10
Load Capacity (kg)	500
Temperature Resistance	-30 °C TO +60 °C
Plate Size (mm)	135 x 110
Hole Centres (mm)	105 x 80/75
Top Plate Thickness (mm)	4
Swivel Radius (mm)	167

BIL GROUP LTD

Porte Marsh Road, Calne, Wiltshire, SN11 9BW

Registered in England No: 2603821

VAT Reg: GB572705729

