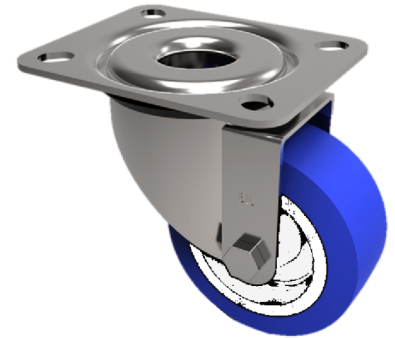


Soft Blue Polyurethane Nylon Plate Swivel Castor 125mm 250kg Load

Product code: BZPH125ENPB



Pressed steel swivel castor with a top plate fixing fitted with a 82 shore A blue polyurethane tyred on a white nylon centred wheel with a roller bearing. Wheel diameter 125mm, tread width 35mm, overall height 157mm, top plate 135mm x 110mm, hole centres 105mm x 80mm. Load capacity 250kg.

| | |
|--------------------------|--|
| Diameter (mm) | 125 |
| Castor Type | Swivel |
| Fixing Option | Plate |
| Height (mm) | 155 |
| Wheel Material | Polyurethane on Nylon |
| Colour / Shore Hardness | Blue Polyurethane on NylonRim / 82 Shore A |
| Temperature Resistance | -30 °C TO +60 °C |
| Bearing Type | Roller |
| Load Capacity (kg) | 250 |
| Tread (mm) | 35 |
| Swivel Radius (mm) | 104 |
| Plate Size (mm) | 135 x 110 |
| Hole Centres (mm) | 105 x 80/75 |
| Top Plate Thickness (mm) | 4 |
| Fork Thickness (mm) | 4 |
| To Suit Fixing Bolt (mm) | 10 |

BIL GROUP LTD

Porte Marsh Road, Calne, Wiltshire, SN11 9BW

Registered in England No: 2603821

VAT Reg: GB572705729

