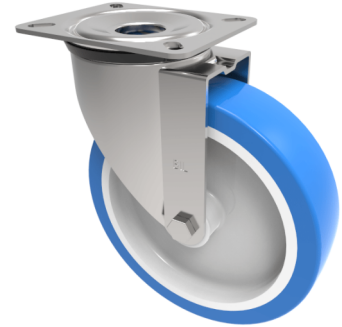


## Soft Blue Polyurethane Nylon Plate Swivel Castor 125mm 300kg Load

**Product code: SSEH125ENPB**



Grade 304 Pressed stainless steel swivel castor with a top plate fixing fitted with a blue 82 shore A polyurethane tyred white nylon centred wheel with roller bearing. Wheel diameter 125mm, tread width 35mm, overall height 155mm, top plate 105mm x 86mm, hole centres 80mm x 60mm. Load capacity 300kg

Diameter (mm)	125
Fixing Option	Plate
Castor Type	Swivel
Height (mm)	156
Wheel Material	Polyurethane on Nylon
Colour / Shore Hardness	Blue Polyurethane on NylonRim / 82 Shore A
Bearing Type	Roller
Tread (mm)	35
Fork Thickness (mm)	3
To Suit Fixing Bolt (mm)	8
Load Capacity (kg)	300
Temperature Resistance	-30 °C TO +60 °C
Plate Size (mm)	105 x 86
Hole Centres (mm)	80 X 60
Top Plate Thickness (mm)	3
Swivel Radius (mm)	106

### BIL GROUP LTD

Porte Marsh Road, Calne, Wiltshire, SN11 9BW

Registered in England No: 2603821

VAT Reg: GB572705729

