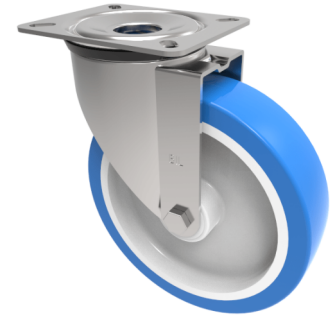


Soft Blue Polyurethane Nylon Plate Swivel Castor 200mm 700kg Load

Product code: SSPH200ENPB/HD



Grade 304 Pressed stainless steel swivel castor with a top plate fixing fitted with a blue polyurethane tyred white nylon centred wheel with a roller bearing. Wheel diameter 200mm, tread width 48mm, overall height 238mm, top plate 135mm x 110mm, hole centres 105mm x 80mm. Load capacity 700kg

Diameter (mm)	200
Fixing Option	Plate
Castor Type	Swivel
Height (mm)	238
Wheel Material	Polyurethane on Nylon
Colour / Shore Hardness	Blue Polyurethane on NylonRim / 82 Shore A
Bearing Type	Roller
Tread (mm)	50
Fork Thickness (mm)	4
To Suit Fixing Bolt (mm)	10
Load Capacity (kg)	700
Temperature Resistance	-30 °C TO +60 °C
Plate Size (mm)	135 x 110
Hole Centres (mm)	105 x 80/75
Top Plate Thickness (mm)	4
Swivel Radius (mm)	153