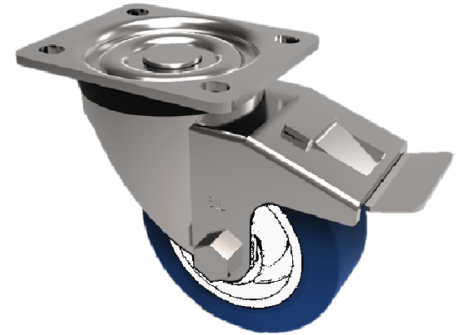


Soft Blue Polyurethane Nylon Plate Swivel Castor Brake 100mm 150kg Load

Product code: BZMM100ENPBSWB

Pressed steel swivel castor with top plate fitted with a 82 shore A blue polyurethane tyre white nylon centred wheel with roller bearings and a totallock brake. Wheel diameter 100mm, tread width 32mm, overall height 128mm, plate size 205mm x 85mm, hole centres 80mm x 60mm with a Load capacity 150kg.



Diameter (mm)	100
Castor Type	Swivel with Total Lock Brake
Fixing Option	Plate
Height (mm)	128
Wheel Material	Polyurethane on Nylon
Colour / Shore Hardness	Blue Polyurethane on NylonRim / 82 Shore A
Temperature Resistance	-30 °C TO +60 °C
Bearing Type	Roller
Load Capacity (kg)	150
Tread (mm)	32
Swivel Radius (mm)	88
Plate Size (mm)	105 X 85
Hole Centres (mm)	80 X 60
Top Plate Thickness (mm)	2
Fork Thickness (mm)	2
To Suit Fixing Bolt (mm)	8

BIL GROUP LTD

Porte Marsh Road, Calne, Wiltshire, SN11 9BW

Registered in England No: 2603821

VAT Reg: GB572705729

