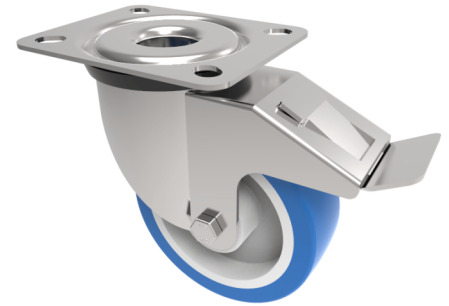


Soft Blue Polyurethane Nylon Plate Swivel Castor Brake 100mm 250kg Load

Product code: SSEH100ENPBSWB



Stainless steel swivel castor with a top plate fixing fitted with a blue 82 shore A polyurethane tyre on white nylon centre wheel with a roller bearing and total lock brake. Wheel diameter 100mm, tread width 40mm, overall height 128mm, top plate 105mm x 86mm, hole centres 80mm x 60mm Load capacity 250kg.

Diameter (mm)	100
Fixing Option	Plate
Castor Type	Swivel with Total Lock Brake
Height (mm)	128
Wheel Material	Polyurethane on Nylon
Colour / Shore Hardness	Blue Polyurethane on NylonRim / 82 Shore A
Bearing Type	Roller
Tread (mm)	33
Fork Thickness (mm)	3
To Suit Fixing Bolt (mm)	8
Load Capacity (kg)	250
Temperature Resistance	-30 °C TO +60 °C
Plate Size (mm)	105 x 86
Hole Centres (mm)	80 X 60
Top Plate Thickness (mm)	3
Swivel Radius (mm)	115