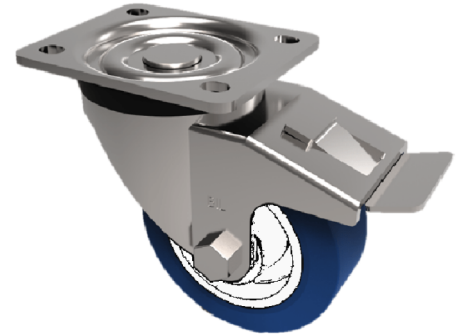


## Soft Blue Polyurethane Nylon Plate Swivel Castor Brake 100mm 250kg Load

**Product code: BZH100ENPBJSWB**

Pressed steel swivel castor with fitted a top plate with a blue 82 shore A polyurethane tyre on white nylon centred wheel with ball bearing and total lock brake. Wheel diameter 100mm, tread width 32mm, overall height 128mm. top platge 105mm x 86mm with 80mm x 60mm hole centresLoad capacity 250kg.



Diameter (mm)	100
Castor Type	Swivel with Total Lock Brake
Fixing Option	Plate
Height (mm)	128
Wheel Material	Polyurethane on Nylon
Colour / Shore Hardness	Blue Polyurethane on NylonRim / 82 Shore A
Temperature Resistance	-30 °C TO +60 °C
Bearing Type	Ball
Load Capacity (kg)	250
Tread (mm)	32
Swivel Radius (mm)	90
Plate Size (mm)	105 x 86
Hole Centres (mm)	80 X 60
Top Plate Thickness (mm)	4
Fork Thickness (mm)	4
To Suit Fixing Bolt (mm)	8

### BIL GROUP LTD

Porte Marsh Road, Calne, Wiltshire, SN11 9BW

Registered in England No: 2603821

VAT Reg: GB572705729

