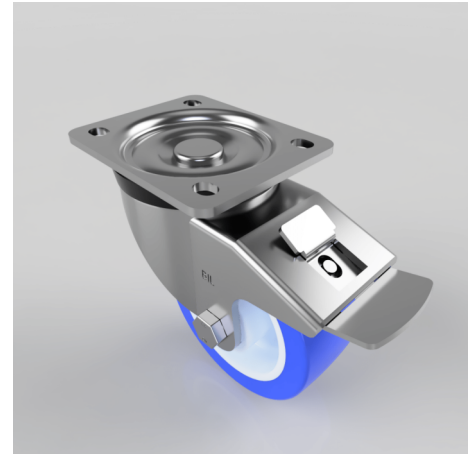


Soft Blue Polyurethane Nylon Plate Swivel Castor Brake 100mm 300kg Load

Product code: BZH100ENPBSWB

Pressed steel swivel castor with a top plate fixing fitted with a blue 82 shore A polyurethane tyre on white nylon centre wheel with roller bearings and total lock brakes. Wheel diameter 100mm, tread width 40mm, overall height 128mm, top plate 105mm x 86mm, hole centres 80mm x 60mm Load capacity 300kg. Please note the tyre is flat and designed for floor protection but this may increase tractive resistance.



Diameter (mm)	100
Castor Type	Swivel with Total Lock Brake
Fixing Option	Plate
Height (mm)	128
Wheel Material	Polyurethane on Nylon
Colour / Shore Hardness	Blue Polyurethane on Nylon Rim / 82 Shore A
Temperature Resistance	-30 °C TO +60 °C
Bearing Type	Roller
Load Capacity (kg)	300
Tread (mm)	40
Swivel Radius (mm)	90
Plate Size (mm)	105 x 86
Hole Centres (mm)	80 X 60
Top Plate Thickness (mm)	4
Fork Thickness (mm)	4
To Suit Fixing Bolt (mm)	8

BIL GROUP LTD

Porte Marsh Road, Calne, Wiltshire, SN11 9BW

Registered in England No: 2603821

VAT Reg: GB572705729

