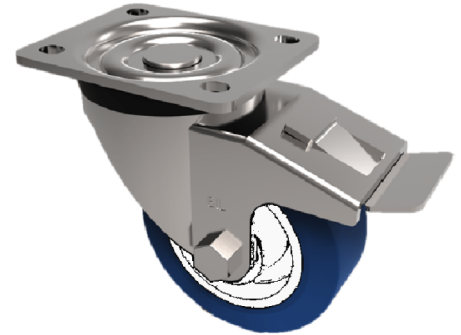


## Soft Blue Polyurethane Nylon Plate Swivel Castor Brake 150mm 500kg Load

**Product code: BZPH150ENPBJSWB**

Pressed steel swivel castor with a top plate fitted with a 82 shore A blue polyurethane tyre white nylon centred wheel with ball bearings and a total lock brake. Wheel diameter 150mm, tread width 40mm, overall height 188mm, top plate 135mm x 110mm, hole centres 105mm x 80/75mm. Load capacity 500kg.



Diameter (mm)	150
Castor Type	Swivel with Total Lock Brake
Fixing Option	Plate
Height (mm)	188
Wheel Material	Polyurethane on Nylon
Colour / Shore Hardness	Blue Polyurethane on NylonRim / 82 Shore A
Temperature Resistance	-30 °C TO +60 °C
Bearing Type	Ball
Load Capacity (kg)	500
Tread (mm)	40
Swivel Radius (mm)	165
Plate Size (mm)	135 x 115
Hole Centres (mm)	105 x 80/75
Top Plate Thickness (mm)	4
Fork Thickness (mm)	4
To Suit Fixing Bolt (mm)	10

### BIL GROUP LTD

Porte Marsh Road, Calne, Wiltshire, SN11 9BW

Registered in England No: 2603821

VAT Reg: GB572705729

