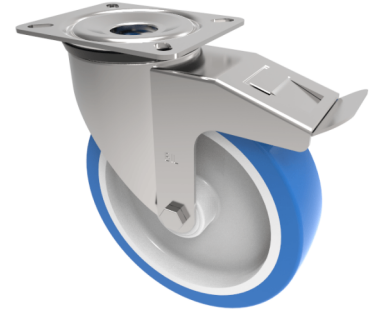


Soft Blue Polyurethane Nylon Plate Swivel Castor Brake 200mm 400kg Load

Product code: SSMM200ENPBSWB



Grade 304 Pressed stainless steel swivel castor with a top plate fitted with a 82 shore A blue polyurethane tyre on white nylon centered wheel with roller bearing bore and a total lock brake, 200mm wheel diameter, 50mm tread width, 235mm overall height, 140 x 110mm top plate, 105 x 80/75mm bolt holes, with a load capacity of 400kgs.

| | |
|--------------------------|--|
| Diameter (mm) | 200 |
| Fixing Option | Plate |
| Castor Type | Swivel with Total Lock Brake |
| Height (mm) | 235 |
| Wheel Material | Polyurethane on Nylon |
| Colour / Shore Hardness | Blue Polyurethane on NylonRim / 82 Shore A |
| Bearing Type | Roller |
| Tread (mm) | 50 |
| Fork Thickness (mm) | 3 |
| To Suit Fixing Bolt (mm) | 10 |
| Load Capacity (kg) | 400 |
| Temperature Resistance | -30 °C TO +60 °C |
| Plate Size (mm) | 135 x 110 |
| Hole Centres (mm) | 105 x 80 |
| Top Plate Thickness (mm) | 3 |
| Swivel Radius (mm) | 167 |