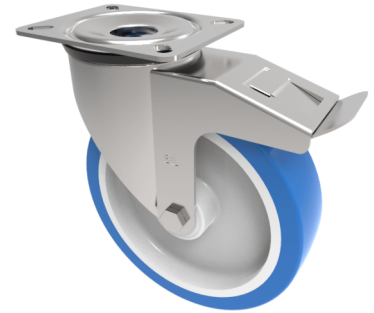


## Soft Blue Polyurethane Nylon Plate Swivel Castor Brake 200mm 400kg Load

**Product code: SSMM200ENPSWB**



Grade 304 Pressed stainless steel swivel castor with a top plate fitted with a 82 shore A blue polyurethane tyre on white nylon centered wheel with plain bore with total lock brake, 200mm wheel diameter, 50mm tread width, 235mm overall height, 140 x 110mm top plate, 105 x 80/75mm bolt holes, with a load capacity of 400kgs.

Diameter (mm)	200
Fixing Option	Plate
Castor Type	Swivel with Total Lock Brake
Height (mm)	235
Wheel Material	Polyurethane on Nylon
Colour / Shore Hardness	Blue Polyurethane on NylonRim / 82 Shore A
Bearing Type	Plain
Tread (mm)	50
Fork Thickness (mm)	3
To Suit Fixing Bolt (mm)	10
Load Capacity (kg)	400
Temperature Resistance	-30 °C TO +60 °C
Plate Size (mm)	135 x 110
Hole Centres (mm)	105 x 80
Top Plate Thickness (mm)	3
Swivel Radius (mm)	167

### BIL GROUP LTD

Porte Marsh Road, Calne, Wiltshire, SN11 9BW

Registered in England No: 2603821

VAT Reg: GB572705729

