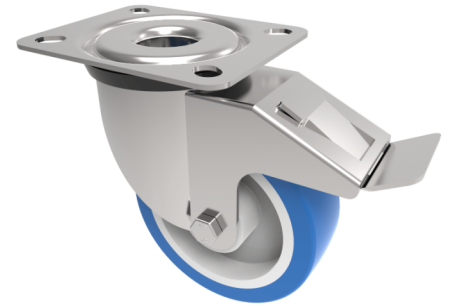


Soft Blue Polyurethane Nylon Plate Swivel Castor Brake 80mm 210kg Load

Product code: SSEH80ENPSWB



Grade 304 Pressed stainless steel swivel castor with a top plate fixing fitted with a 82 Shore A blue polyurethane tyred white nylon centred wheel with a plain bore and a total lock brake. Wheel diameter 80mm, tread width 33mm, overall height 111mm, top plate 105mm x 86mm, hole centres 80mm x 60mm. Load capacity 210kg

| | |
|--------------------------|--|
| Diameter (mm) | 80 |
| Fixing Option | Plate |
| Castor Type | Swivel with Total Lock Brake |
| Height (mm) | 110 |
| Wheel Material | Polyurethane on Nylon |
| Colour / Shore Hardness | Blue Polyurethane on NylonRim / 82 Shore A |
| Bearing Type | Plain |
| Tread (mm) | 33 |
| Fork Thickness (mm) | 3 |
| To Suit Fixing Bolt (mm) | 8 |
| Load Capacity (kg) | 210 |
| Temperature Resistance | -30 °C TO +60 °C |
| Plate Size (mm) | 105 x 86 |
| Hole Centres (mm) | 80 X 60 |
| Top Plate Thickness (mm) | 3 |
| Swivel Radius (mm) | 116 |

BIL GROUP LTD

Porte Marsh Road, Calne, Wiltshire, SN11 9BW

Registered in England No: 2603821

VAT Reg: GB572705729

