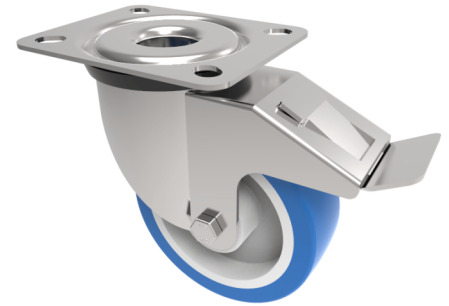


Soft Blue Polyurethane Nylon Plate Swivel Castor Brake 80mm 210kg Load

Product code: SSEH80ENPBSWB



Grade 304 Pressed stainless steel swivel castor with a top plate fixing fitted with a 82 Shore A blue polyurethane tyred white nylon centred wheel with a roller bearing and a total lock brake. Wheel diameter 80mm, tread width 33mm, overall height 111mm, top plate 105mm x 86mm, hole centres 80mm x 60mm. Load capacity 210kg

Diameter (mm)	80
Fixing Option	Plate
Castor Type	Swivel with Total Lock Brake
Height (mm)	110
Wheel Material	Polyurethane on Nylon
Colour / Shore Hardness	Blue Polyurethane on NylonRim / 82 Shore A
Bearing Type	Roller
Tread (mm)	33
Fork Thickness (mm)	3
To Suit Fixing Bolt (mm)	8
Load Capacity (kg)	210
Temperature Resistance	-30 °C TO +60 °C
Plate Size (mm)	105 x 86
Hole Centres (mm)	80 X 60
Top Plate Thickness (mm)	3
Swivel Radius (mm)	116

BIL GROUP LTD

Porte Marsh Road, Calne, Wiltshire, SN11 9BW

Registered in England No: 2603821

VAT Reg: GB572705729

